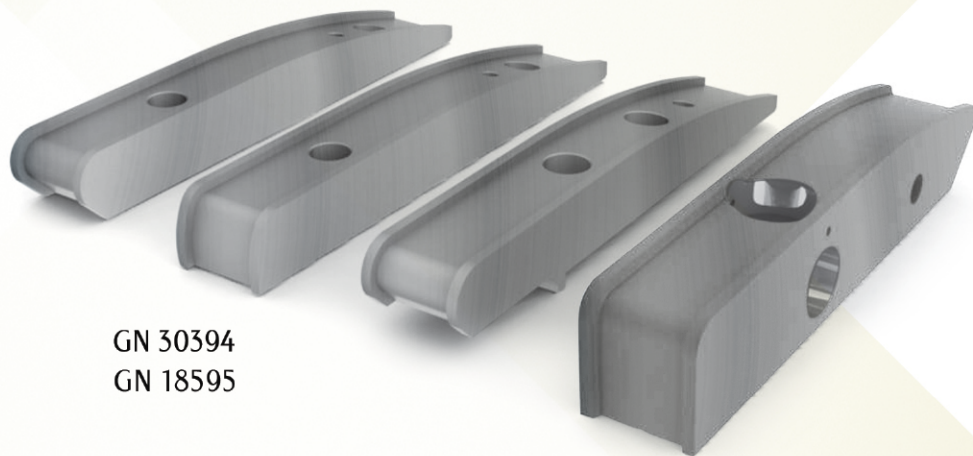
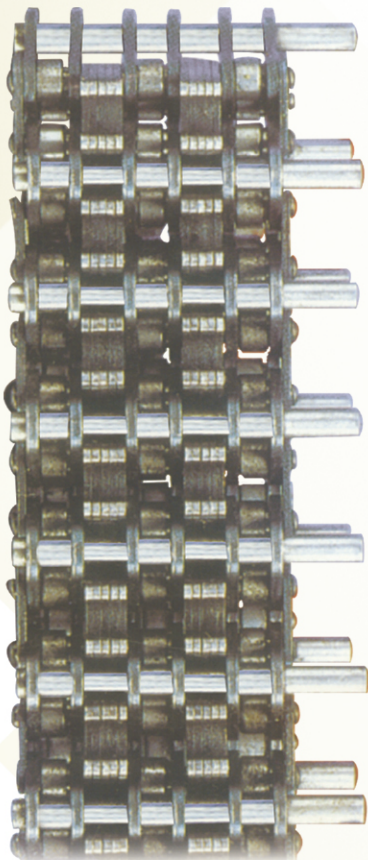


Spares for  
**WORSTED**  
Preparation Machinery



## Quality Chains for Chain Driven Gilling Machine



GN 30394  
GN 18595



GN 13706  
GN 74266

GN 13705  
GN 64266



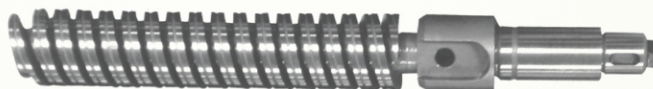
GN 4727

GN 13610  
GN 72017

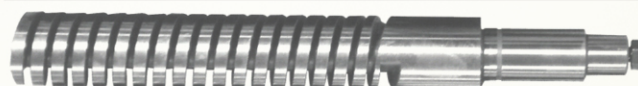
GN 13609  
GN 62017



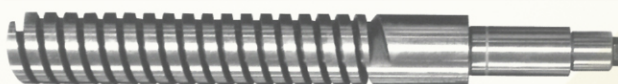
GN 13872



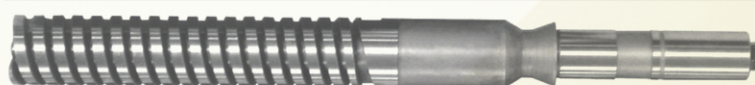
GN 13871



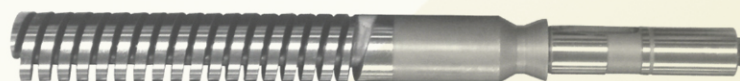
GN 13870



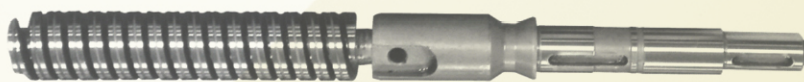
GN 13869



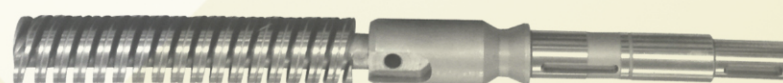
GN 13868



GN 13867



GN 13866



GN 13865

- ▶ Suitable for Schlumberger GC 12/13/14/15 (Part No. 432A1152M), GC 30(432A337A) & St Andrea CSN Gill Box.
- ▶ Dimensional Accuracy for perfect fitting of Faller Bars.
- ▶ High grade metallurgy for long life.

**ZUVON**<sup>TM</sup>  
PINS & PINNED PRODUCTS

Better Engineering  
For Better Fiber

**Bajaj Industries Private Limited**  
P-16 Sahitya Parishad Street  
Kolkata - 700 006 (India)

Tel & Fax : +91 33 2555 4048  
e : [contact@zuvongroup.com](mailto:contact@zuvongroup.com)  
[www.zuvongroup.com](http://www.zuvongroup.com)